



PIPELINES AND TERMINAL OPERATIONS DIVISION

2010



ORLEN Lietuva

History

1995	Start of the Būtingė Terminal construction
July 21, 1999	Start of loading operations at the Būtingė Terminal.
July 2006	Export operations terminated. Import of crude oil started
Dec. 18, 2007	The 500th tanker accommodated at the Terminal
March 24, 2008	The 100th tanker which imported crude oil for Mažeikiai refinery.

Tanker FRONT BIRCH (149,999 DWT) was the biggest tanker of 600 tankers loaded at the Terminal



Pipeline System



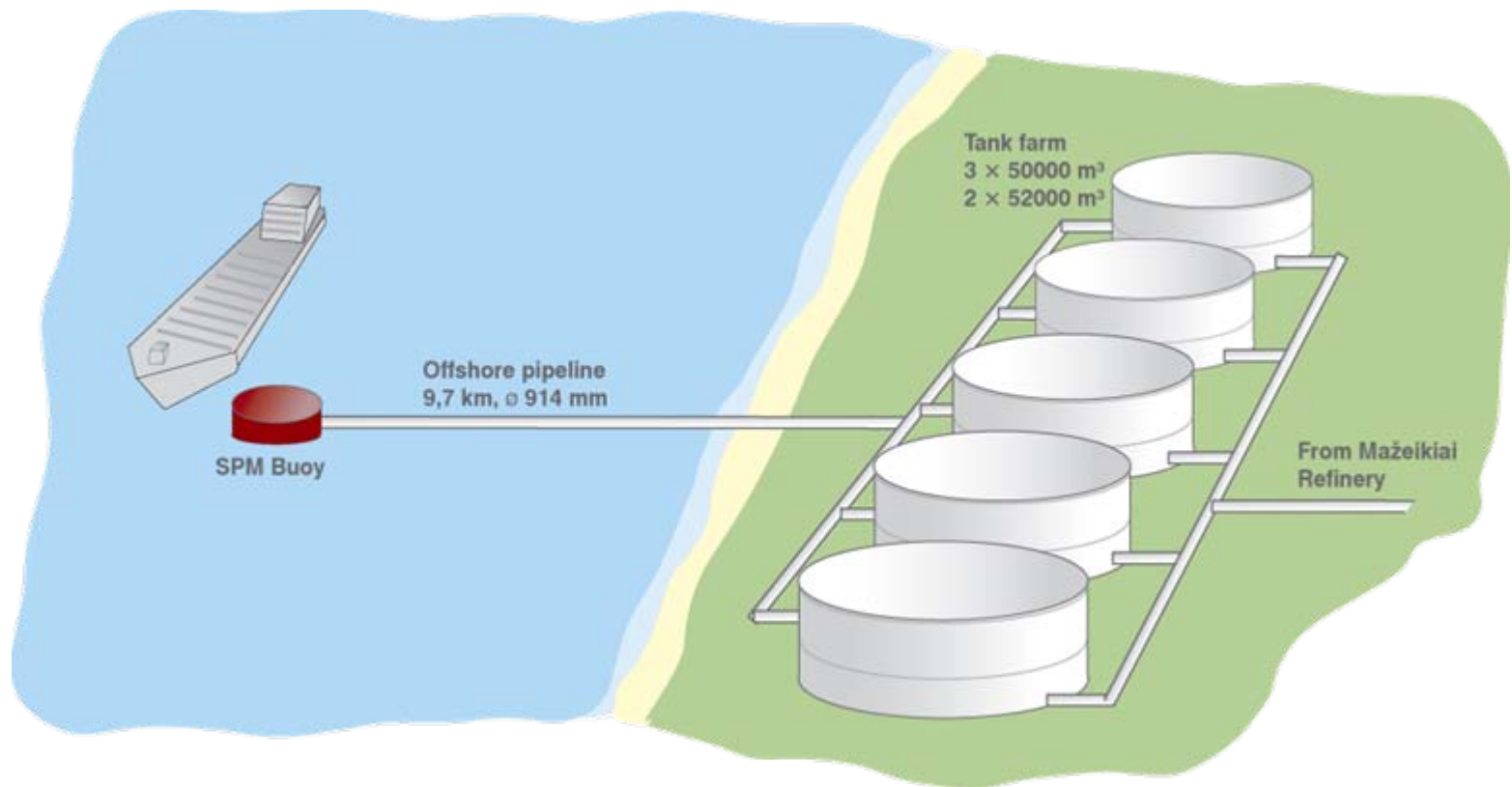
Butinge Terminal



- **Import capacity - 14 mln. tons of crude oil per year**
- **SPM certified for tankers up to 150,000 DWT**
- **Flow rate tanker – Terminal: 5 000 m³ per hour**
- **Flow rate Butinge – Mažeikiai refinery:
1 750 m³ per hour
42 000 m³ per day**



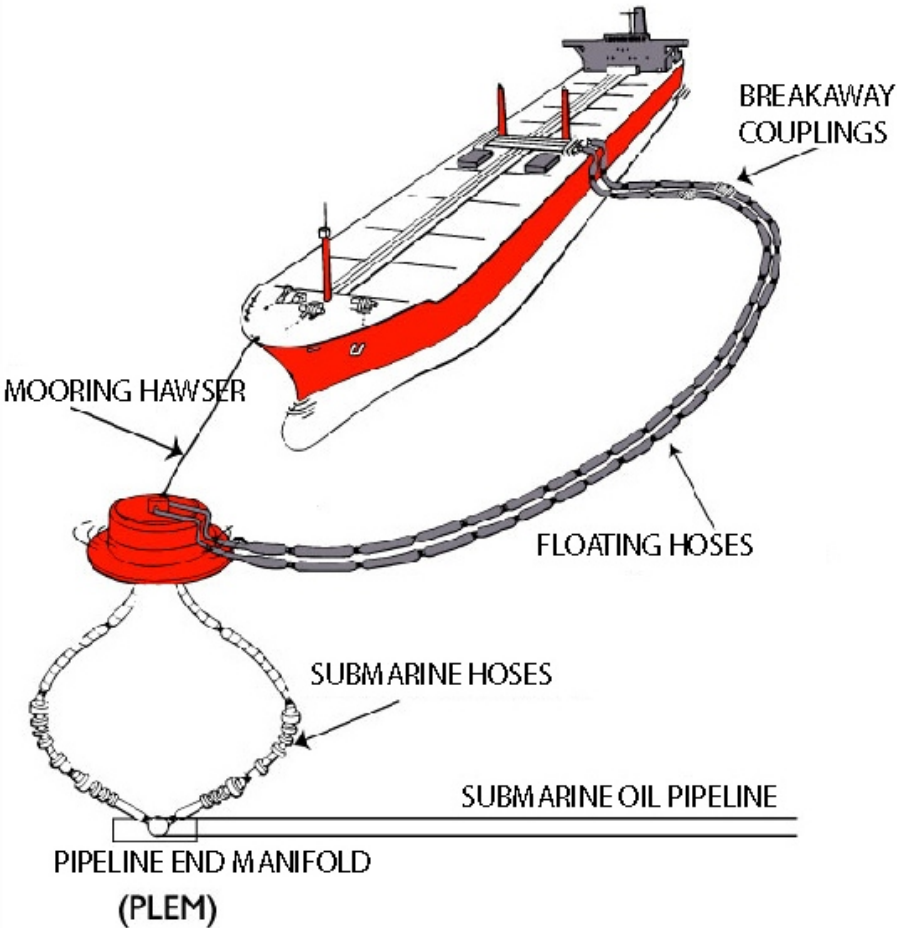
Terminal Layout



The tankers (100 000 tons DWT) are accommodated within 30 hours



SPM Buoy

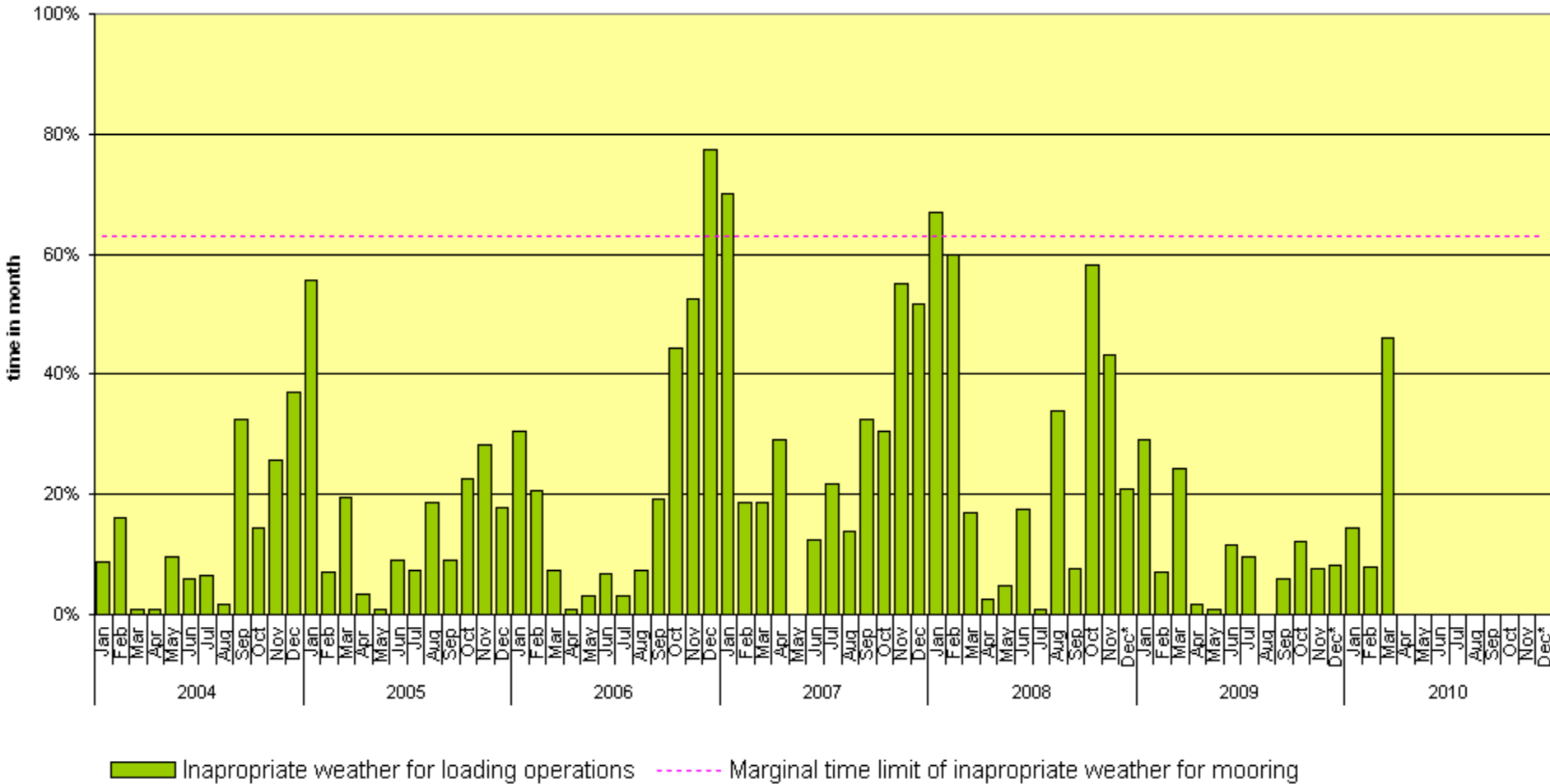


Maximum Operating Conditions for the Būtingė Terminal

Action	Wind Speed	Significant Wave Height
Mooring to SPM	up to 16 m/s	2,5 meters
Stop cargo transfer, unmoor from SPM	above 19 m/s	3,0 meters
Embarking Loading Masters on a Tanker	up to 14 m/s	2,0 – 2,5 meters
Additional sub-sea inspection of SPM buoy after strong storm	above 28 m/s	-

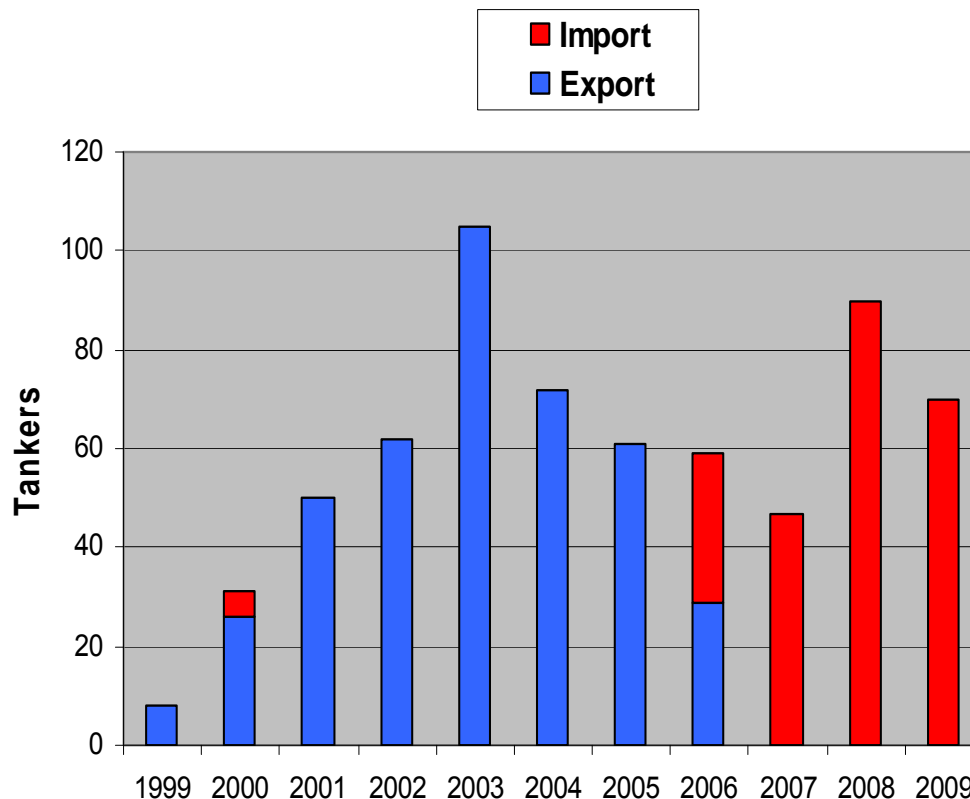


Weather Statistics (2004-2010)



Crude Oil Export and Import

1999 - 607 mln. tons (8 tankers)
2000 - 3 089 mln. tons (31 tanker)
2001 - 5 061 mln. tons (50 tankers)
2002 - 6 074 mln. tons (62 tankers)
2003 - 10 716 mln. tons (105 tankers)
2004 - 7 243 mln. tons (72 tankers)
2005 - 6 126 mln. tons (61 tanker)
2006 - 5 888 mln. tons (59 tankers)
2007 - 4 576 mln. tons (47 tankers)
2008 - 9 068 mln. tons (90 tankers)
2009 - 8 389 mln. tons (84 tankers)
Plan for 2010 – 8.9 mln. tons



Human Resources

- **Employees:**
 - **Offshore Operations Group** 9
 - **Terminal Operations Group** 17
 - **Maintenance Group** 4
 - **Power and Instrumentation Group** 9
 - **Operations Support Group** 6
 - **Pipelines Section (Biržai)** 28





Thank you !

